

PORTFOLIO

Residential / Commercial / Corporate / Hospitality



GFP Interiors

SERVICES

Conceptual Interior Design
Schematic Interior Design
Design Development
Contract Documentation

Spatial Programming
Bespoke Interior Design
Material & Finishes Selection
Joinery & Millwork Details
FF&E Specifications
Styling & Sourcing

CONTACT

Email: inquiry@gfpinteriors.com
Tel: (632) 8553-7229 to 32
Mobile: (63) 9176370864

ADDRESS

16th floor BDO Plaza, 8737 Paseo de Roxas,
Makati City, 1226, Philippines

ONLINE PORTFOLIO





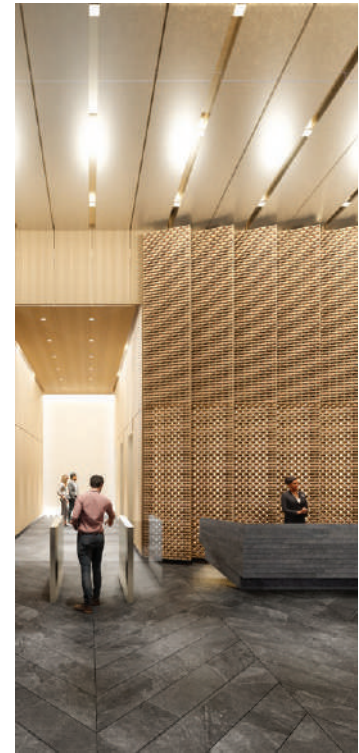
4

Our Team



7

Our Design Process



8

Residential Interiors

24

Commercial Interiors

32

Corporate Interiors

40

Hospitality Interiors



Frances Camille R. Parado

President & CEO

Camille's design practice and philosophy puts the context and history of a place centerstage. She believes it is the thorough understanding of context that makes it easier to evoke emotion—and possibly challenge convention.

Her decade of multi-faceted professional experience ranges from private residences to resorts and corporate headquarters even before her time as head of GFPI.

At the helm of GFPI, she manages and delegates work among team members, oversees coordination between clients, consultants, and contractors.

GFP Interiors is made up of experienced interior designers and architects collaborating to create innovative and inspired designs.

Our area of expertise ranges from high-end residential units, commercial centers, corporate offices and institutional interiors.

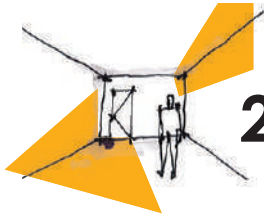


We create ***design solutions*** that deliver ***real value*** and sustain a legacy of ***informed, responsive*** and ***inspired spaces***.

Our Design Process

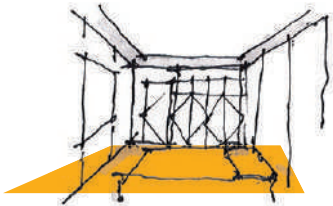
1 Project Brief

Meetings with the client to develop the project brief are held wherein key objectives, requirements, and goals of the project are outlined. Discussion about design concept and construction is formed, and a budget is agreed upon.



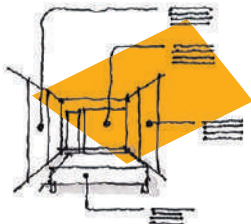
2 Schematic Design

Gathering and refining of initial ideas with the client are done to be able to map out a clear and unique design concept for the project. Preliminary sketches, spatial planning, and material swatches are presented to better communicate design intent.



3 Design Development

Developing initial ideas into a more concise design solution. This phase also includes the refinement of space planning and intent of interior elements such as finishes, fittings and lighting fixtures.



4 Contract Documentation

Preparing working drawings, schedules, specifications, as well as contract documents for relevant approvals, certification and construction.

5 Tender and Coordination

Coordinating working drawings with contractors and builders to ensure all quality standards are met. Ensuring that the interpretation of drawings and specifications are communicated properly.



6 Construction Administration

Regularly coordinating and communicating with contractors to resolve any issues that may arise during construction. Conducting routine site meetings and visits to oversee construction progress.



7 FF&E

Selecting specific furniture, fixtures, art, and accessories to harmonize the overall aesthetic and integrate these with the design concept of the project.

Residential Interiors

The Seasons Residences Natsu Villa

FEDERAL LAND INC.
Bonifacio Global City, Philippines



Above: Penthouse Unit

Japanese design features such as comfort, elegance, lightness of space, and the use of natural materials are key elements in the design of The Seasons Residences residential units.





Left: Haru Penthouse Bedroom
Right: Haru Villa Living and Dining Area

Lucima Tower

ARTHALAND
Cebu City, Philippines

Shown: Main Lobby





This 37-storey development that sits on 2,245 square meters of prime real estate at the corner of Cardinal Rosales and Samar Loop in Cebu Business Park is envisioned to be the first quadruple-certified sustainable high-rise residential condominium in the country. It has earned pre-certification for LEED Gold by the US Green Building Council. It is vying for *EDGE*®, *WELL*™ and *BERDE* certifications.

Through the building's timeless design, meticulously executed construction, and thoughtful features, Lucima will provide ease, comfort, and wellness, enhancing the living conditions of its residents and tenants.

Top: Function Room
Bottom: Fitness Center



The Grand Midori Ortigas is the first Japanese-themed residential project in the Ortigas area. This project consists of 2 towers on a common podium with commercial areas on the ground floor.

This project, in design collaboration with Tange Associates, incorporates distinctive Japanese features in the facade, unit layouts, amenities, and landscaping.

Top Left: Multi-purpose Room /
Bottom Left: Fitness Center
Right: Study Lounge



The Grand Midori Ortigas

FEDERAL LAND INC.
Ortigas Center, Pasig City, Philippines



The project is a premium residential tower designed as a two-tower mixed use development at the heart of the Ortigas Central Business District. The structure utilizes high-performance glass for its facade, and Amenities include a Mini Theater, Gym & Yoga Rooms, Residence Lounge, Social Hall & an Outdoor pool.

Design Collaboration with Antonio Zuppati (AND)

Top Left: Main Lobby
Bottom Left: Children's Play Room
Right: Mini-Theater



Residences at the Galleon

ORTIGAS LAND
Ortigas Center, Pasig City, Philippines



Lucima Showroom

ARTHALAND
Cebu City, Philippines

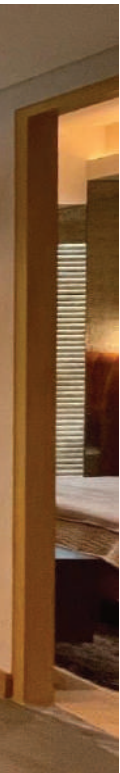
This project interiors sets the standard of luxury living through its seamless interweaving of wellness and sustainability, thoughtful features and timeless design.

Shown: 2BR Unit





Shown: Upper right: Master Bedroom / Lower
Right: Guest Toilet / Lower Left: 1BR Dining Area



The Courtyard Showroom

EMPIRE EAST HOLDINGS, INC.
Cainta, Rizal, Philippines

The Courtyard: The Courtyard Showroom features the aesthetics of industrial interior design and creates a visually captivating, seamless flow throughout the entire space.

*Top Right : Studio Unit
Bottom Right: Cafe
Bottom Left: Main Lobby*





The Gold Loop Showroom

FEDERAL LAND, INC.
Pasig City, Philippines

A residential showroom embracing the Japanese aesthetics of Wabi-Sabi, featuring muted tones, handcrafted details, and nature-infused design for a minimalist feel that celebrates authenticity and spatial flexibility.

*Shown: Top: 1BR Living/Dining
Bottom: Negotiation Area*



Crown Residences Showroom

TORRE LORENZO DEVELOPMENT CORPORATION
Davao City, Philippines



*Shown: Top: 1BR Living/Dining
Bottom: Bedroom*



Corporate Interiors

Ryan, LLC

RYAN, LLC
Mandaluyong City, Philippines

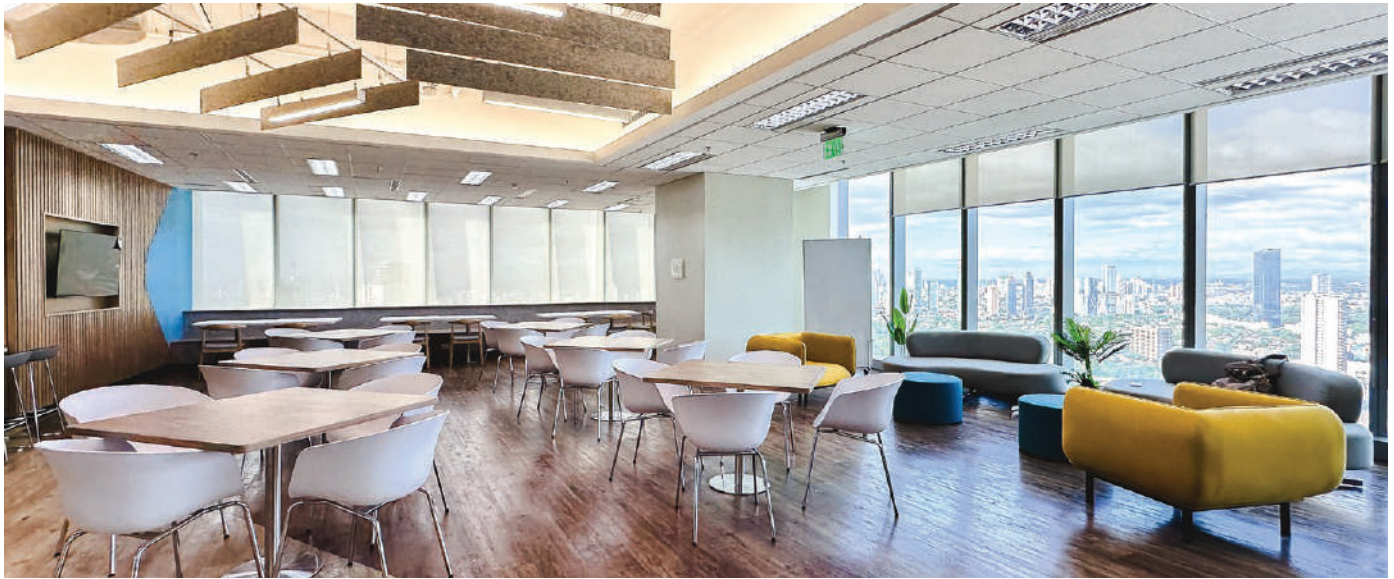
Centered on optimizing both employee productivity and well-being, the Ryan LLC Office exemplifies a purposeful layout designed to elevate the overall work experience.





Top Left: Conference Room
Bottom Left: Main Work Area
Top Right: Breakout Space
Bottom Right: Focus Area







The 192-meter tower will also offer grade A office within the city's choicest business district. The building set to be one of Cebu's tallest is LEED Gold registered and will have eco-efficient features making it attractive to global and other occupiers that put a premium on sustainability. The tower's exterior evokes Cebu City's tradition of wood craftsmanship. The delicate, shingled facade is composed of high-performance glass and aluminium forms that are painted to resemble light, textured wood.

Design Collaboration with
Skidmore, Owings & Merrill

*Clockwise from top left: Roof deck/
Main Lobby/ Porte Cochere Main Entrance*



Masters Tower Cebu Office

CEBU LANDMASTERS INC.
Cebu City, Philippines



Offices at the Galleon

ORTIGAS LAND
Ortigas Center Pasig City, Philippines

Shown: Breezeway Retail Area



Offices at The Galleon will be comprised of 31-office levels with food and retail shops on the first two levels of the tower. The Galleon reflects a culture of efficiency, comfort and wellness and includes an elegantly designed office lobby and retail spaces inside the building.

Design Collaboration with Antonio Zuppati (AND)

Right: Office Elevator Lobby / Main Lobby



Commercial Interiors

Jhaena Jewels

MR. & MRS. FOO
Olongapo City, Zambales, Philippines

Jhaena Jewels captivates with luxurious interior spaces that elevate the shopping experience. Gleaming marble floors reflect the strategically placed radiant lighting, creating a warm glow that spotlights the exquisite jewelry displayed in brass-trimmed glass showcases. Plush beige accents adorn the walls, providing a touch of inviting sophistication. This interplay of reflective surfaces, rich textures, and warm lighting creates a lavish ambiance, the perfect backdrop for showcasing timeless elegance.







Sossymo Boutique

MR. & MRS. FOO
Olongapo City, Zambales, Philippines

Sossymo Boutique aims to provide their clients an amazing shopping experience, immersing them in a world of ambition and luxury.





Expertly designed with special needs in mind, this vibrant space offers a sensory-rich environment for children of all abilities. Featuring tactile steps, a soothing ball pit, adaptive sensory swings, and a colorful village mural, it encourages exploration and development in a safe, welcoming setting that celebrates diversity and inclusivity in play.

*Top left: Lobby
Bottom Left: Play Therapy Area
Right: Play Therapy Area*



Angel Beats Play and Development Center

Angel Beats Play and Development Center
Angeles, Pampanga





The Haeven KTV & Coffee Lounge

MR. & MRS. FOO
Olongapo City, Zambales, Philippines

This trendy KTV and Coffee Lounge gives
a unique experience to its customers with
its bold statement and bright accents.



Hospitality Interiors



Sofitel Cebu

CEBU LANDMASTERS INC.
Cebu City, Philippines

The Sofitel Cebu is a 195-room hotel that is part of a mixed-use development in Cebu Business Park. Its design embodies the finest of Cebuano ingenuity and craftsmanship, and with sustainability as one of its pillars.

Design Collaboration with Aston Design





Top Left: Hotel Room
Bottom Left Meeting Room
Top right: Sky Lobby Detail Shot
Bottom Right: Sky Lobby





The Haeven

MR. & MRS. FOO
Olongapo City, Zambales, Philippines

The Haeven Airbnb balances comfort and luxury through a harmonious design. The serene bedroom invites relaxation, while the chic living space with bespoke furnishings offers a stylish haven. A sleek, fully-equipped kitchen caters to culinary adventures, and panoramic views blur the lines between indoors and out. This project showcases a design that prioritizes comfort and luxury for a truly unforgettable guest experience.

*Top Left: Bedroom
Top Right: Lobby
Bottom Left: Kitchen & Dining
Bottom Right: Living Room*



We conceptualize designs
that build a **connection**
between **your vision**
and **our drawing board.**

GFP Architects / GFP Interiors

16th Floor, BDO Plaza, 8737
Paseo de Roxas, Makati City 1226,
Philippines

+632 8553 7232