

# PORTFOLIO

Residential / Hospitality & Leisure / Business / Mixed-Use / Institutional / Conceptual



# Gabriel P. Formoso & Associates Architects

## Gabriel Formoso & Partners Architects

### GF & Partners Architects

## GFP Architects

### SERVICES

Conceptual Design  
Site Analysis  
Schematic Design Services  
Design Development  
Construction Document Services  
Bid Evaluation  
Site Supervision  
Post-Construction Services  
Site Development

Renovation Works  
Code Review

### ADDRESS

11th floor BDO Plaza  
8737 Paseo de Roxas  
Makati City 1226  
Philippines

### CONTACT

www.gfparchitects.com  
(632) 8553-7229 to 32

## GFP Interiors

**GFP INTERIORS** is an interior design studio based in the Philippines. We create client-centered solutions that deliver real value and sustain a legacy of informed, responsive and inspired design.

### SERVICES

Conceptual Interior Design  
Schematic Interior Design  
Design Development  
Contract Documentation

Spatial Programming  
Bespoke Interior Design  
Material & Finishes Selection  
Joinery & Millwork Details  
FF&E Specifications  
Styling & Sourcing

### ADDRESS

16th floor BDO Plaza  
8737 Paseo de Roxas  
Makati City 1226  
Philippines

### CONTACT

www.gfpinteriors.com  
(632) 8553-7229 to 32

<b>WHO WE ARE</b> /GFP Architects at a Glance /Leadership	<b>03</b>
<b>SUSTAINABILITY</b>	<b>08</b>
<b>RESIDENTIAL</b> /Condominiums /Private Residences	<b>11</b>
<b>HOSPITALITY &amp; LEISURE</b> /Hotels and Resorts /Clubhouses	<b>27</b>
<b>BUSINESS</b> /Multi-tenant Office Buildings /Corporate Headquarters /Malls and Retail	<b>35</b>
<b>MIXED-USE</b>	<b>47</b>
<b>INSTITUTIONAL</b> /Educational Buildings / Diplomatic Offices / Government Offices	<b>51</b>
<b>URBAN DESIGN</b>	<b>57</b>
<b>CONCEPTUAL</b> / Competition Entries / Concept Designs	<b>59</b>



100

dedicated  
professionals

GFP Architects is composed of 100 professionals working in its Makati office.

85

years of  
history

Eighty-five years of history and existence as a continuous architectural practice.

50

years of  
partnership

Innovation and reinvention define the practice of GFP Architects.

## World Architecture Top 100 (Since 2018)

GFPA has consistently maintained a place in the Building Design magazine's list of top global architectural practices — a recognition it gives out annually to around 100 firms across the world.

## Global Network

Our large presence in the field has enabled us to connect to a global network of architects and other allied professionals. We regularly collaborate with international practices to bring international design to Philippine shores.

## BCI Asia's Top 10

GFPA is a fixture in BCI Asia's list of top 10 architectural practices in the Philippines — one of the most awaited annual accolades the publication gives out. (2005, 2008-2010, 2014, 2016, 2018, 2019)

## Commitment to Sustainable Design

GFP Architects practices Sustainable Design not only to enhance the health and well-being of the users of our projects, but ultimately to take an active part in helping to mitigate the global problem of climate change.

## Our History 1939

Our Founding Partner, Ar. Gabriel P. Formoso, begins his practice as one of the first 100 architects in the Philippines. He establishes himself on the strength of his single proprietorship practice.

## 1974

He transforms his single proprietorship to a professional partnership. The partnership is registered with the Philippine Securities and Exchange Commission in December 1973 to institutionalize and pursue the vision of its founder. **Gabriel Formoso & Partners Architects is born.**

## 1997

After Ar. Gabriel Formoso's death in December 1996, the firm changes its name to **GF & Partners Architects Co.** to continue the revered architect's legacy.

## 2014

GF & Partners Architects becomes ISO 9001:2008 certified, and also becomes a member of the PhilGBC.

## 2017

GF & Partners Architects becomes **ISO 9001:2015** certified.

## 2018

GF & Partners Architects enters list of the **Top 100 Architectural Firms** by World Architecture 100.

## 2019

**GFP Interiors**, a new venture and our interior design counterpart, is born.

## 2021

GF & Partners Architects begins its brand refresh campaign as **GFP Architects**.

## 2024

GFP Architects is once again recognized as one of the **Top 100 Architectural Firms** by World Architecture 100.



# GFP Architects at a glance



THE PARTNERSHIP

The current partners are, from the left , Ar. Xavier Antonio “Bing” Garcia, the Managing Partner Ar. Annette F. Gaddi-Liganor, and Ar. Arnulfo “Arni” Villanueva.



GFP Architects has been a partnership since 1974 and has produced continuous, constant leadership from its homegrown crop of architects. Every architect under the firm is given opportunities to lead and take charge early on during their stay to be able to train and eventually rise up to the partnership.

Leadership



“I’ve been with GFP Architects for over 40 years and have grown tremendously with the firm. I’m a very hands-on mentor and quite detail-oriented, if I do say so myself.

I enrich my practice and gain new perspectives by immersing myself in other related arts such as graphic design, performance art, painting, and music.”

Annette



“My passion for illustration drew me to pursue the architectural profession. All the little details you deal with as an architect coupled with over 35 years in practice enabled me to become an effective design manager.

Work may be engaging and all, but the best part of my day would be spending time with my family, particularly bonding with our adorable daughter. Balancing my professional and personal life helps me become someone our budding architects in the firm can look up to.”

Bing



“GFP Architects pretty much runs as well as its time management. I like to regularly circle back on the project requirements and then talk about how my team can deliver in the shortest possible time without compromising on accuracy and quality.”

ARNI



# The Team

**JUNIOR PARTNER AND SENIOR ASSOCIATES**

From top left to bottom right: Junior Partner, Gener DL Liwanag; Senior Associates, Bartolome C. Aguas, Jocelyn Socorro C. Antonio, Angela Q. Mesina, and Jonathan-Mari L. Reyes



**THE ASSOCIATES**

From left to right: Pablo O. Balilo, Rogerio R. Canlas Jr., Christian Rey T. Domingo, and Joseph Evan U. Figueroa



# Sustainability

“GFPA effectively applies passive and active techniques in designing sustainable buildings and communities.”



# Projects with Sustainability Certifications

LEED | BERDE | EDGE | WELL



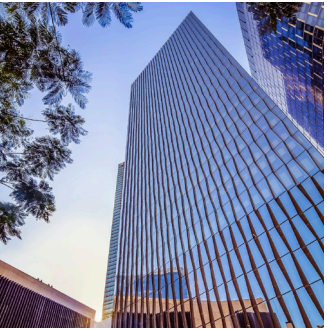
**Masters Tower Cebu**  
Cebu Business Park, Cebu City



**Lucima**  
Cebu Business Park, Cebu City



**Cebu Exchange**  
Cebu IT Park, Cebu City



**Arthaland Century Pacific Tower**  
BGC, Taguig City

LEED | BERDE



**Sunlife of Canada**  
BGC, Taguig City



**Shangri-La at the Fort**  
BGC, Taguig City

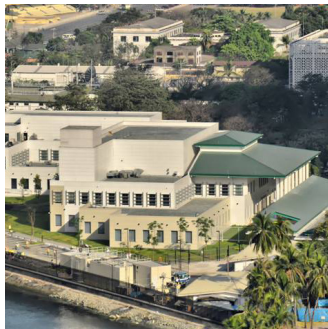


**Serendra East Tower**  
BGC, Taguig City

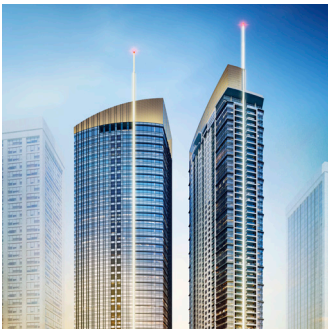


**Vertis North**  
Quezon City

LEED



**US Embassy New Office Annex**  
Manila City



**The Galleon**  
Ortigas Center, Pasig City

## The Philippine Green Building Code of 2016

With the implementation of this referral code to the National Building Code, GFP Architects adopted and complied with the green building requirements of the code.

# Projects that employed Passive Sustainable Design Techniques

Site Response & Sensibility | Orientation & Views | Sunshading Strategies | Lush Landscaping | Low-VOC Materials



**Fairview Terraces**  
Quezon City



**Trinoma**  
Quezon City



**Alabang Town Center**  
Muntinlupa City



**Greenbelt**  
Ayala Center, Makati City



**Moldex Residences Baguio**  
Baguio City



**Ivy Wall Hotel Palawan**  
Puerto Princesa City, Palawan



**Ivy Wall Hotel Bohol**  
Panglao Island, Bohol



**The Imperium**  
Capitol Commons, Pasig City



**San Beda College Rizal**  
Taytay, Rizal



**Crimson Mactan**  
Mactan Island, Cebu



# Residential

“ A good residential tower must  
*balance comfort and economy.* ”

## East and West Gallery Place

AYALA LAND, INC.  
Bonifacio Global City, Taguig, Philippines

East and West Gallery Place is defined by a wide range of residential types and formats in one complex. The facade is punctuated by large openings that betray six distinct residential concepts ranging from the Classic 1BR to 4BR and Flex units, to the limited edition Skysuite, Skycove Aqua, Skyrise, and Villa Residences. During its launch, the Skyrise 1400 unit at East Gallery Place made the papers, fetching a record-breaking selling price of 178 million pesos.





# The Suites

AYALA LAND INC.  
Bonifacio Global City, Taguig, Philippines

The Suites is the residential component of West Superblock, a premier Ayala development right in the center of Bonifacio Global City. The Suites is the most expensive Ayala Land Premier property to date and boasts of 64 floors of prime residential space, with the topmost units having their own swimming pools.



# Viridian

ORTIGAS LAND CO.  
San Juan City, Philippines

A 55-storey residential tower within the Greenhills Shopping Center. The Viridian has two levels of retail space, five floors of basement parking, and one floor devoted to amenities such as a 25-meter infinity pool, a business center, and function hall.



# 1322 Golden Empire Tower

MOLDEX LAND, INC.  
Manila City, Philippines

The 1322 Golden Empire Tower stands as an architectural marvel, a gleaming testament to modernity and luxury. Located in the heart of bustling Manila City, this iconic skyscraper soars gracefully into the sky, dominating the cityscape with its golden-hued exterior. Today, it stands as one of the tallest towers in Manila City.



# Connor

ORTIGAS LAND CO.  
Greenhills, San Juan City, Philippines

Connor at Greenhills is designed for young professionals, growing families, and anyone looking to make a home in a familiar community like Greenhills. Carefully planned residential units and amenities in a location in healthy proximity to Ortigas Center define the Connor living experience.





# Maple at Verdant

ORTIGAS LAND CO.  
Pasig City, Philippines

Maple at Verdant Towers proudly stands as the first of three remarkable towers within this exceptional residential complex, offering not only stunning apartments but also exquisite townhouse units with private gardens. Embracing artistry and craftsmanship, the captivating tatami-inspired facade sets the stage for an extraordinary living experience.



# Empress

ORTIGAS LAND CO.  
Capitol Commons, Pasig City, Philippines

Empress is the latest addition to the Capitol Commons address, envisioned to be a community that has everything one needs to live a comfortable life. The 56-storey tower features smart homes and generous amenity areas designed to calm and relax.



# Maven and Maxen

ORTIGAS LAND CO.  
Capitol Commons, Pasig City, Philippines

Maven and Maxen comprise a two-tower residential development inside Capitol Commons with a commercial center at the podium. The development is geared towards young professionals.





# The Imperium at Capitol Commons

ORTIGAS LAND CO.  
Cebu City, Philippines

This tower stands tall and sleek, with clean lines and contemporary design elements. It features a visually striking façade that combines glass and concrete, creating a harmonious blend of aesthetics and functionality. Its unique style creates a sense of luxury and elegance. With its circular floor plan, the residences offer 360 degree views of the surrounding skyline.



# The Royalton

ORTIGAS LAND INC.  
Capitol Commons, Pasig City, Philippines

Inspired by a veil, the distinctive façade of The Royalton at Capitol Commons is characterized by undulating balconies that seem to billow in the breeze. The unique facade at every level betrays an efficient floor plan still geared for a premium user experience. The project was a welcome logistical challenge for the firm as the design called for a unique plan at every floor.

## RECOGNITION

WINNER  
Best Luxury Condo Development (Metro Manila)  
Philippine Property Awards 2017



# Century Spire

CENTURY PROPERTIES MANAGEMENT, INC.  
Makati City, Philippines

A fusion of luxury residences and state of the art corporate spaces, this architectural masterpiece in collaboration with world-renowned Architect-Daniel Libeskind, is an architectural wonder of glass and steel rising in clear-cut silhouette dominating the great Makati Skyline.

Its peak blooms like a flower and its petals unfold to the world above. The sensory experience of the top floor residents intensifies as it bestows them amazing views of the city. The elegant haute couture interiors are designed by the fashion house of Armani, making this wondrous skyscraper one exquisite structure to rise in Manila.

# Park Point Residences

AYALA LAND INC.  
Cebu City, Philippines

Park Point Residences is a premium lifestyle tower of AyalaLand Premiere in Cebu City. The tower's subtle but elegant architecture blends aesthetics that evoke astonishment and ingenuity. Located amongst the city's premiere dining, shopping and entertainment destinations, the structure redefined Cebu City's skyline with an undeniably sublime elegance.



## The Grand Midori Ortigas

FEDERAL LAND INC.  
Ortigas Center, Pasig City, Philippines

The Grand Midori Ortigas, Federal Land's first development within the Ortigas Central Business District, infuses Japanese aesthetics, technology, and innovation in its architecture, made evident in the exquisite design of its exterior and interior spaces.

The two-tower residential condominium is an echo of the Japanese aesthetic ideals of "Miyabi" reflecting elegance and refinement through the graceful linear elements of the façade; and "Wabi-sabi" an old Japanese concept of "finding beauty in imperfections" was the inspiration in conceiving the lush interiors and undulating landscape style of the commune.

## MyCube Dormitel

DATALAND, INC.  
Binan, Laguna, Philippines

Compact living for students and young professionals in the fast-growing city of Binan, Laguna. MyCube features all the bells and whistles of a condominium in an affordable dorm-type setting.

## Olive Place

DATALAND, INC.  
Mandaluyong City, Philippines

Olive Place is primed to be one of Mandaluyong's prime addresses. The condominium complex consists of two towers each rising to 50 storeys high, making it one of the tallest structures in Mandaluyong. Olive Place combines convenient location with amenities that deviate from standard condominium such as a jacuzzi, library, and yoga deck.





## West Tower and Garden Bridge at One Serendra

AYALA LAND INC.  
Bonifacio Global City, Taguig, Philippines

The West Tower is the second of the two-tower development of the Ayala Land Inc. named One Serendra located at the corner of 11th Avenue and 32nd Street in Bonifacio Global City. The West Tower connects to the East Tower by way of the Garden Bridge.

The West Tower is a 50-storey high-end residential condominium with 372 units while the Garden Bridge features a scenic plaza and exclusive residential units in an eleven-storey structure highlighted by a garden at the roof deck.

## Lucima

ARTHALAND CO.  
Cebu City, Philippines

Rising in the heart of Cebu Business Park, this 37-storey residential development is envisioned to become the first quadruple certified green building in the Philippines. The building puts sustainability and wellness at its forefront to strike a balance between promoting green living and providing comfort to its residents.







## Crown Residences at Tierra Davao

TORRE LORENZO DEVELOPMENT CORPORATION  
Davao City, Philippines

The Crown Residences is a 21-storey premium residential development minutes away from the airport. The building features a large open space with resort-style amenities to support the physical and mental wellbeing of its residents. All the units have their own private balconies with breathtaking views of the gulf.



## Freia at Pico De Loro

COSTA DEL HAMILLO INC.  
Pico De Loro, Batangas, Philippines

Freia is a residential resort development nestled between the picturesque mountains and shores of Batangas. The design hinges on these contextual assets by creating an open reception area at the ground floor delineated only by slats, and by creating angled balconies at each residential unit. The building form is designed in a tiered fashion to maximize morning sun and ensure the most number of units are afforded a good view of the sea.



## Moldex Residences Baguio

MOLDEX REALTY, INC.  
Baguio City, Benguet, Philippines

Moldex Residences Baguio is a residential development nestled in the mountains of the cordilleras. The development showcases modern buildings that emulate the charm and elegance of a mountain villa. Each residence offers a cozy and contemporary living space, complemented by balconies that face towards the refreshing mountain views.



## The Palm at One Serendra

AYALA LAND INC.  
Bonifacio Global City, Taguig, Philippines

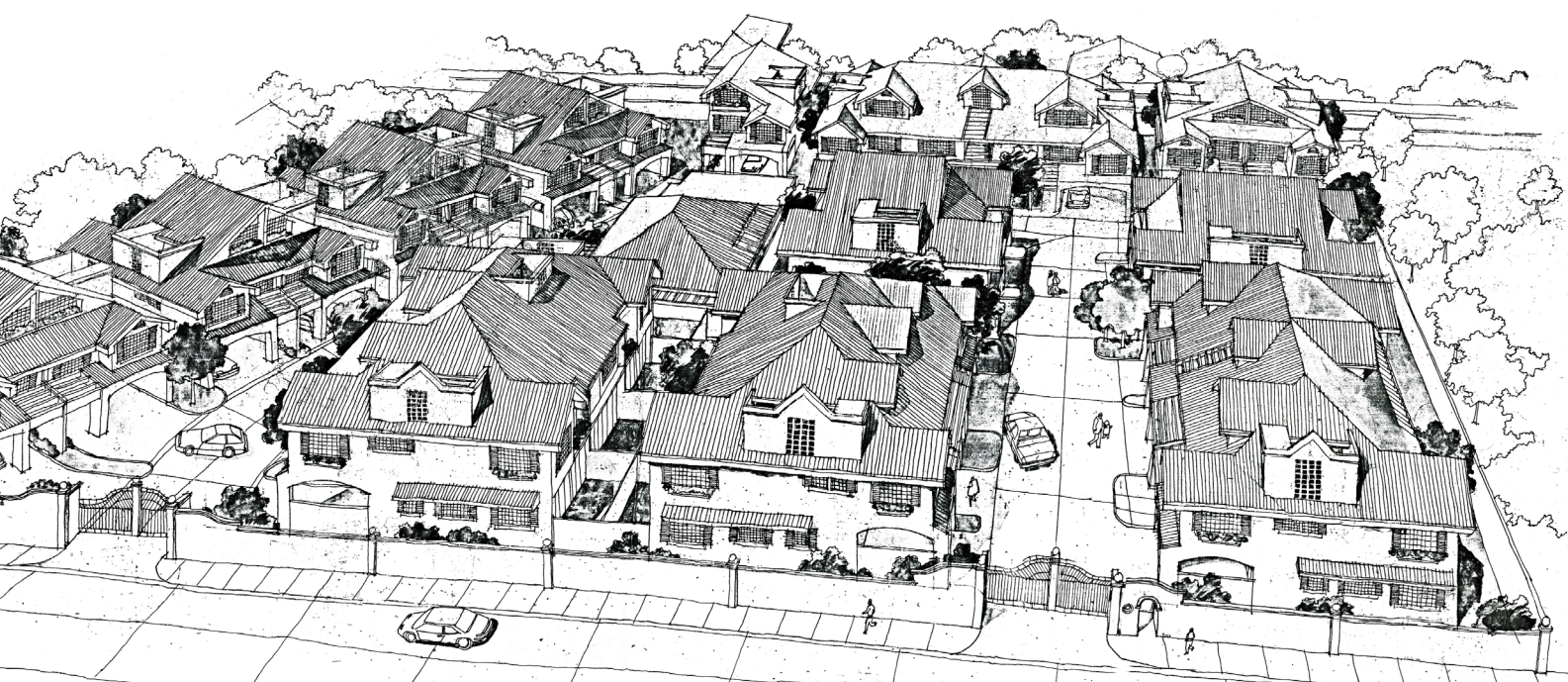
Envisioned to be an upscale community with plenty of invigorating green space at their disposal, the Bahay-na-Bato inspired Palm at One Serendra consists of several mid-rise residential buildings all fitted with long lines of slatted balcony space reminiscent of the galeria volada of old times.



## Apartments at Evangelista

Makati City, Philippines

A mid-rise mixed-use building with a balanced look of a modern Asian home and office. Warm-toned walls and painted louvers on the upper floors create a cozy residential ambiance, while the glazed lower commercial floors give the structure an overall condominium-like appearance.



## Francis Court Townhouses

San Juan City, Philippines

This exclusive community offers American-style townhouses combining traditional charm with modern aesthetics. Spacious, tree-lined driveways lead to each appointed duplex home, ensuring privacy for the residents.

## Custom Homes

GFP Architects excels in crafting residential spaces that transcend boundaries of scale, size, and locale. Each project, whether grand or modest, urban or rural, reflects a blend of innovation and client vision. Collaborative and detail-oriented, our designs seamlessly integrate modernity with timeless elegance, harmonizing with their surroundings.

From concept to completion, every step is guided by a commitment to excellence, ensuring bespoke living environments that exceed expectations. With a diverse portfolio and a passion for creativity, GFP Architects continues to redefine residential design, creating sanctuaries that embody both sophistication and comfort.





# Hospitality & Leisure

“ Our homes invite familiarity  
*as much as our hotels invite diversity.* ”

## Shangri-La at The Fort

SHANG GLOBAL CITY PROPERTIES INC.  
Bonifacio Global City, Taguig, Philippines

The third Shangri-La hotel in Metro Manila is a 62-storey glass edifice with 97 hotel residence units, 576 hotel guestrooms, and 98 condominium units. The landscaped park at the ground floor adjoins a public park — a nod to the large green spaces characteristic of Bonifacio Global City. A streamlined exterior of glass and steel planes contain within it tasteful interiors in muted hues and rich textures in a modernized interpretation of local Filipino design sensibilities.







## Ivy Wall Hotel Palawan

DATA LAND INC.  
Puerto Princesa City, Palawan, Philippines

A 120-room boutique hotel located in Puerto Princesa, Palawan. It has a gross floor area of approximately 10,500 square meters.



## Okada Manila

Paranaque City, Philippines

Okada Manila is, to date, one of the largest projects of GFP Architects. The gargantuan entertainment complex totals 49 hectares and features 28,000 sqm of Casinos, 2000 hotel rooms, a shopping mall, a great selection of unique, high end restaurants, as well as Asia's largest theatrical fountain and enclosed indoor beach club, now known as Cove MNL. The main structure is clad in glistening gold panels, visible on a clear day's drive along the South Luzon Expressway.



## Ivy Wall Hotel Bohol

BEST WESTERN HOTELS  
Panglao Island, Bohol, Philippines

Ivy Wall Bohol is an 80-room resort hotel located in Alona beach in the island of Panglao, Bohol, and is the first international-chain resort to have a presence in the province. The resort is fully compliant with environmental guidelines.



# Seda Hotel Manila Bay

AYALA LAND INC.  
Paranaque City, Philippines

A leading hospitality chain, Seda Hotel Manila Bay offers its signature warm contemporary ambiance. Nestled within the 204-hectare district of Aseana City, its architecture is fluid in style. The 13-storey hotel is poised atop the podium of the Ayala Malls Manila Bay allowing easy access to the five-level mall within its complex. Its roof deck offers a magnificent view of the Manila Bay sunset.



# Makati Shangri-La

Makati City, Philippines

The Makati Shangri-La was the first hotel to rise in Makati after a 17-year lull period. Its angular plan seemingly welcomes guests on one side and grants them a commanding view of the ever-evolving Makati skyline on the other.

GFP Architects eventually took on the construction of the hotel chain's BGC property — the third Shangri-La hotel in Metro Manila, rising 20 or so years after the Makati property started enchanting its guests with top-notch service.



# The Peninsula Manila

Makati City, Philippines

One of the many iconic hotels born from the 70s hotel boom, the Peninsula Manila has become a permanent fixture at the heart of the Makati Central Business District and is a visual anchor for the vicinity due to its mirrored masses and imposing, utilitarian silhouette it largely owes to the trend of the time.



# Crimson Mactan

CRIMSON HOTELS AND RESORTS  
Mactan Island, Cebu, Philippines

Crimson Resort and Spa Mactan is a 6-hectare oasis of hospitality and relaxation. Guests can opt to stay in one of the 250 guestrooms or find tranquility in one of the 40 private villas each with their own plunge pools.



## Valley Golf and Country Club - Dining Hall

Antipolo, Rizal, Philippines

The Valley Golf and Country Club Dining Hall Renovation takes inspiration from the different "Tee Times". Morning hues unveil a cozy indoor and outdoor dining area. Sunset sets the stage for elegant dinners, followed by twilight cocktails in a relaxed lounge setting.



## Alabang Golf and Country Club

Alabang, Muntinlupa City, Philippines

A private clubhouse containing dining room, bar lounge, banquet hall convertible to function rooms, 10 lane bowling alleys. Facilities such as 18-hole golf course, polo field, 12 tennis courts, swimming and wading pool, squash courts, badminton court are provided to cater to members of the club.

The Alabang Golf and Country Club has been one of the premiere golf clubs in Metro Manila Area since 1981.





# Business

“ We consider malls and offices as  
*social spaces that facilitate connection.* ”

## Cebu Exchange

ARTHALAND CO.  
Salinas Rd., Cebu City, Philippines

Cebu Exchange is the largest eco-friendly office tower in the Philippines and Arthaland's first venture outside Luzon. In line with the client's vision of building sustainable legacies, Cebu Exchange features technology and planning that put end-user wellbeing front and center. The project is on track for LEED, BERDE, and WELL certification.

The office 39-storey tower features wellness infrastructure such as open plazas and jogging paths along its height.

### RECOGNITION

Pre-certified LEED Gold

BERDE 5-star

### WINNER:

Best Office High-Rise Development  
2019 Japan International Property Awards  
Best Office Development (Philippines)  
Best Office Development (Cebu)  
2018 Philippines Property Awards

### HIGHLY COMMENDED:

Best Commercial Landscape Design  
2019 Philippines Property Awards  
BPO Office Development  
BPO Office Architectural Design  
2018 Philippines Property Awards  
Green Project of the Year  
2018 Lamudi's The Outlook







# Arthaland Century Pacific Tower

ARTHALAND CO.  
Bonifacio Global City, Taguig, Philippines

The flagship property of boutique developer Arthaland Co. is a multi-awarded development with sustainability and innovation ingrained in its being. The geometric glass panels of its facade seemingly disappear into straight lines as they approach the sky.

## RECOGNITION

Certified LEED Platinum  
BERDE 5-Star Certified  
World's first EDGE Zero Carbon Certified Project

2016 Philippine Property Awards, Highly  
Commended, Best Office Architectural Design, Best  
Green Development

Special Recognition in Sustainable Design, 2016  
South East Asia Property Awards

# GT International Tower

FEDERAL LAND INC.  
Makati City, Philippines

GT International Tower is a 47-storey office building designed with a state-of-the-art building management system programmed at its core. The signature silhouette of GT Tower with its delicate fins and striking angles have welcomed businessmen and ordinary citizens for almost two decades and is undeniably one of the stars of the Makati City skyline.







## Pacific Star Building

THE REPUBLIC OF NAURU  
Makati City, Philippines

Commissioned personally by the President of the Republic of Nauru, the Pacific Star Building had, in its inception, the aim of becoming the tallest building in the country at the time. The stark white facade is complemented with tall, graceful arches, lending a delicate softness to its imposing mass. The development is finished off with a large plaza that capitalizes on Pacific Star's corner address.

The timeless recipe of the Pacific Star Building's design became a desired aesthetic of many other developers, soon replicating it in other buildings. The classic shapes and simple volumes of the Pacific Star Building is still able to confidently stand side-by-side with the glass giants of Makati City, over thirty years after its inception.



## Paragon Corporate Center

GRUPPO MEDICA INC.  
Alabang, Muntinlupa City, Philippines

Located at the Madrigal Business Park in Alabang, this 18-storey office building houses the Gruppo Medica Inc. This building has a dedicated floor for conferences and training and a big meeting room that can easily accommodate 150 people. The adjoining terrace is a convenient and pleasant place to hold cocktail parties,

The penthouse holds the executive offices, board room and a Filipino-inspired lounge for receiving guests and business partners.



## Circuit

AYALA LAND INC.  
Makati City, Philippines

Circuit Lane is distinguished by its organic, open floor plan and a central water feature that functions as the spine. Highlighting the importance of interaction in a public retail space, Circuit Lane also features sunken dining pods, a floating stage for 50 people, and an amphitheater.

Across Circuit Lane is the 1,520-seater Circuit Performing Arts Theater (CPAT) designed to be at par with international theater production standards.





## Gatewalk Central

AYALA LAND INC.  
Mandaue City, Cebu, Philippines

Gatewalk Central is a masterplanned estate with an Ayala Mall as one of its anchor features. A Seda hotel, a BPO office, and a chapel are integrated with the mall.

The community is a signature development combining the conveniences of urban life and the simple ease and softness of living closer to nature and open space.



## Ayala Malls Manila Bay

AYALA LAND INC.  
Paranaque City, Philippines

Finding your way through this huge labyrinth of a mall will bring out the explorer in you. The art of playfulness in planning and design is evident in its architecture, with dynamic, changing facades at every turn, with no corner left untouched.

Visitors may gather their bearings and meet loved ones in the expansive central park, anchored by a structure clad in lively orange panels. Ayala Malls Manila Bay is part of a larger development that also contains offices and a Seda Hotel.

## Fairview Terraces

AYALA LAND INC.  
Quezon City, Philippines

The Terraces sits on what used to be a lagoon. Said lagoon was taken to heart in designing this mall north of Manila. The development is hinged on a food and beverage strip featuring al fresco dining overlooking lush tropical gardens.







## Alabang Town Center

AYALA LAND INC.  
Alabang, Muntinlupa City, Philippines

What began in the 90s as a solitary arcade, Alabang Town Center (ATC) has expanded into a 130,000 square meter complex of retail and green space. Its organic growth is evident in the blending architectural styles. At the heart of the complex is an oval plaza surrounded with tree-lined arcades and filtered sunlight—a wholesome space and family destination in the South Metro.



## The Walk (AITP)

AYALA LAND INC.  
Cebu City, Philippines

The Walk is a two-level retail component of the Cebu IT Park development combining dining options and comfort services.



## Cebu Terraces

AYALA LAND INC.  
Cebu City, Philippines

This famed shopping center is a celebration of unwinding landscape gardens, energizing water features and first-class outdoor activity areas. A tropical retreat in an urban setting, the shopping mall resonates a contemporary tropical and fluid façade that personifies the cosmopolitan city while mirroring the welcoming character of Cebuanos.



## Trinoma

AYALA LAND INC.  
Quezon City, Philippines

Triangle North of Manila, otherwise known as TRINOMA, is a six-storey commercial complex with 130,000 sqm of retail spaces characterized by al fresco areas, water features, and extensive landscaping. Truly an oasis at the concrete heart of Quezon City.





## Greenbelt 3, 4, and 5

AYALA LAND INC.  
Makati City, Philippines

A multi-level shopping mall designed to take advantage of garden spaces true to the original vision of National Artist Ildefonso P. Santos. The latest addition to one of Makati's green oases, Greenbelt 5 is the largest of the five malls fronting a garden anchored at Greenbelt chapel, a crowd favorite among Makati's catholic faithful.

### RECOGNITION

Urban Land Institute Global Award  
for Excellence, 2003



## Abreeza Mall

AYALA LAND INC.  
Davao City, Philippines

A seven-storey mall with three levels dedicated to retail and four levels dedicated to BPO offices.

### RECOGNITION

Finalist, 2012 ICSC Asia Pacific Shopping Center Awards for New Developments.

## Crown Residences Showroom and Lease Office

TORRE LORENZO DEVELOPMENT CORPORATION  
Davao City, Philippines

The Crown Residences showroom and lease office in Davao City seamlessly blend with the existing development, offering a glimpse into luxurious living amidst the cityscape. Experience elegance in every detail.



## Gold Loop Showroom

FEDERAL LAND INC.  
Ortigas Center, Pasig City, Philippines

Inspired by Wabi-Sabi philosophy, the Gold Loop Showroom embodies a harmonious blend of simplicity and beauty. Weaving elements throughout reflect the essence of the residential development, creating a serene and inviting space. Experience tranquility and understated elegance in every corner, where imperfections are celebrated as part of life's journey.



## Vertis North Estate Association Office

AYALA LAND INC.  
Quezon City, Philippines

A design for an estate property management office in Quezon City. The language of the architecture is simple and straightforward but captures the aesthetic theme of the developer's main office.





# Mixed-Use

“Flexible masterplans will always  
*adapt to society’s ever-changing needs.*”

## The Galleon

ORTIGAS LAND INC.  
Ortigas Center, Pasig City, Philippines

At the heart of the Ortigas Center you can find this high-end 39-storey office tower flanked by its 52-storey residential sibling. The mixed-use complex is anchored at ground level by a large retail area to create a public space for all its users to enjoy.





# Masters Tower Cebu

CEBU LANDMASTERS, INC.  
Cebu City, Philippines

Masters Tower Cebu is a 31-storey hotel and office tower located in the Cebu Business Park. It is set to become the home of Sofitel in Cebu. The tower is expected to become a major landmark in the city, showcasing the local woodworking craft. The building facade provides a high level of solar shading while allowing natural light to enter the building.



# Greenhills Shopping Center

ORTIGAS LAND INC.  
San Juan City, Philippines

GFP Architects has been tasked with rehabilitating one of San Juan's lasting fixtures - Greenhills Shopping Center. The long-term undertaking consists of renovations, new construction, and masterplanning on the ageing buildings inside the complex.

One of the challenges was to create a contemporary lifestyle destination while staying true to Greenhills' reputation as one of Metro Manila's landmarks. GFP Architects is currently developing Phase 1 of the complex, which includes shopping malls, BPO offices, and a residential tower.



# Vertis North

AYALA LAND INC.  
Quezon City, Philippines

A complement to the Trinoma development and the next phase to Ayala Land's North Triangle Development, this three-tower estate for corporate and retail use creates a new business commercial hub in Quezon City.



# Institutional

“ The greatest of human societies  
*benefit from the spaces they can build.* ”

## MIIS Campus at Parklinks

MULTIPLE INTELLIGENCE INTERNATIONAL SCHOOL  
Pasig City, Philippines

An international school and learning platform, drawing inspiration from the iconic Philippine bahay-kubo stilts. This innovative design fosters a sense of home for young minds, boasting state-of-the-art learning facilities and spaces.

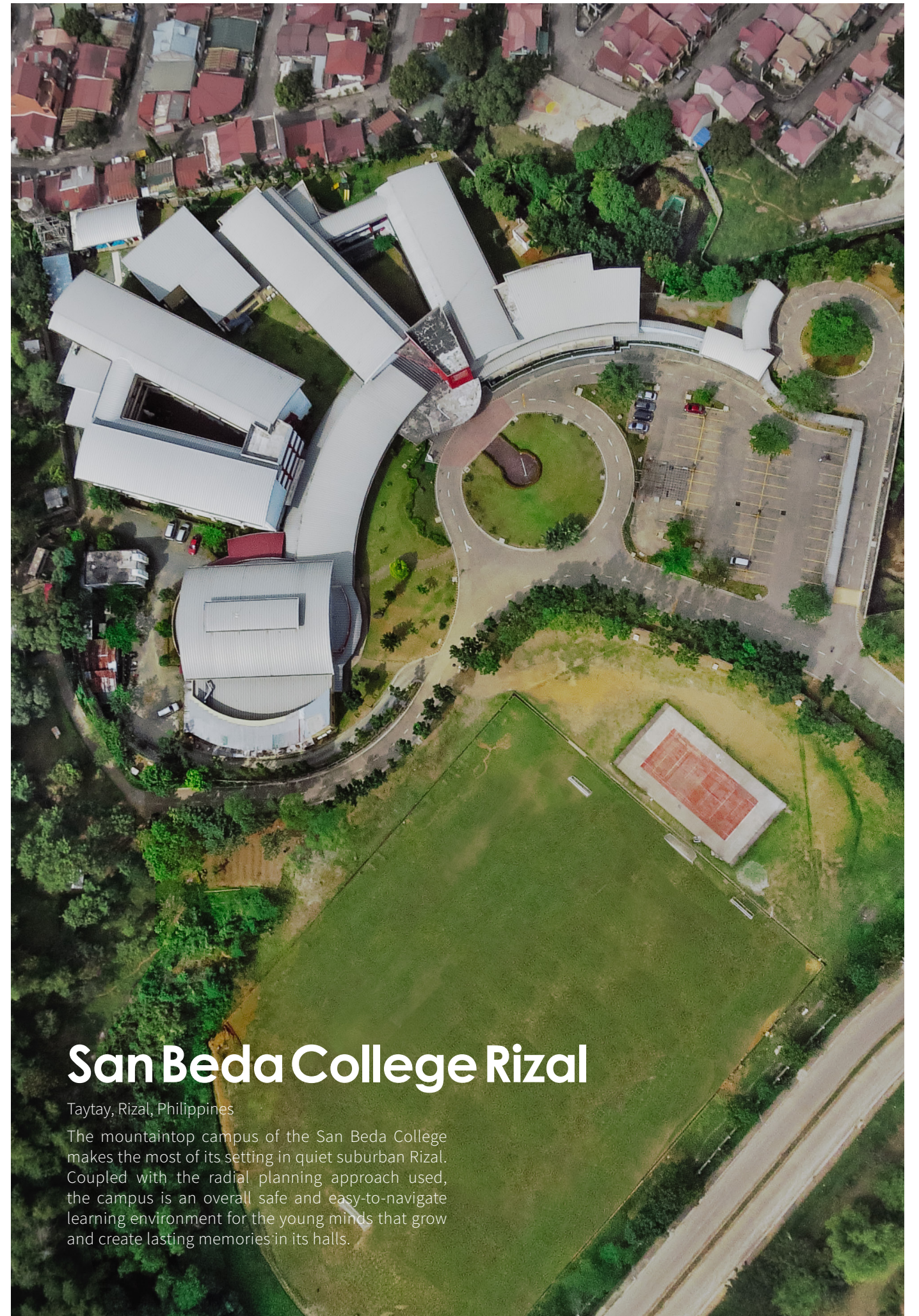




# Lapu-Lapu Cebu International College

Lapu-Lapu City, Cebu, Philippines

Composed of four main buildings, LCIC's new campus was designed to provide students a world-class learning experience. The campus features state-of-the-art facilities, surrounded by greeneries.



# San Beda College Rizal

Taytay, Rizal, Philippines

The mountaintop campus of the San Beda College makes the most of its setting in quiet suburban Rizal. Coupled with the radial planning approach used, the campus is an overall safe and easy-to-navigate learning environment for the young minds that grow and create lasting memories in its halls.





## US Embassy New Office Annex

Manila, Philippines

The annex buildings for the US Embassy in Manila aimed to take international standards of design, anthropometrics, and building safety and reconcile them with Filipino design sensibilities. The highly secure, imposing masses of the programming were balanced out by a tiering scheme with expansive roofs reminiscent of rice terraces. The exterior treatment for the walls took inspiration from local weaving patterns.



## Bangko Sentral ng Pilipinas Main Complex

Manila, Philippines

The four-building main complex of the Bangko Sentral ng Pilipinas is characterized by rectilinear massing and uniformity. The design of the building was an exercise in quick, decisive planning, as the old Central Bank building in Intramuros was badly damaged by a strong earthquake. The institution needed a good, effective design immediately.

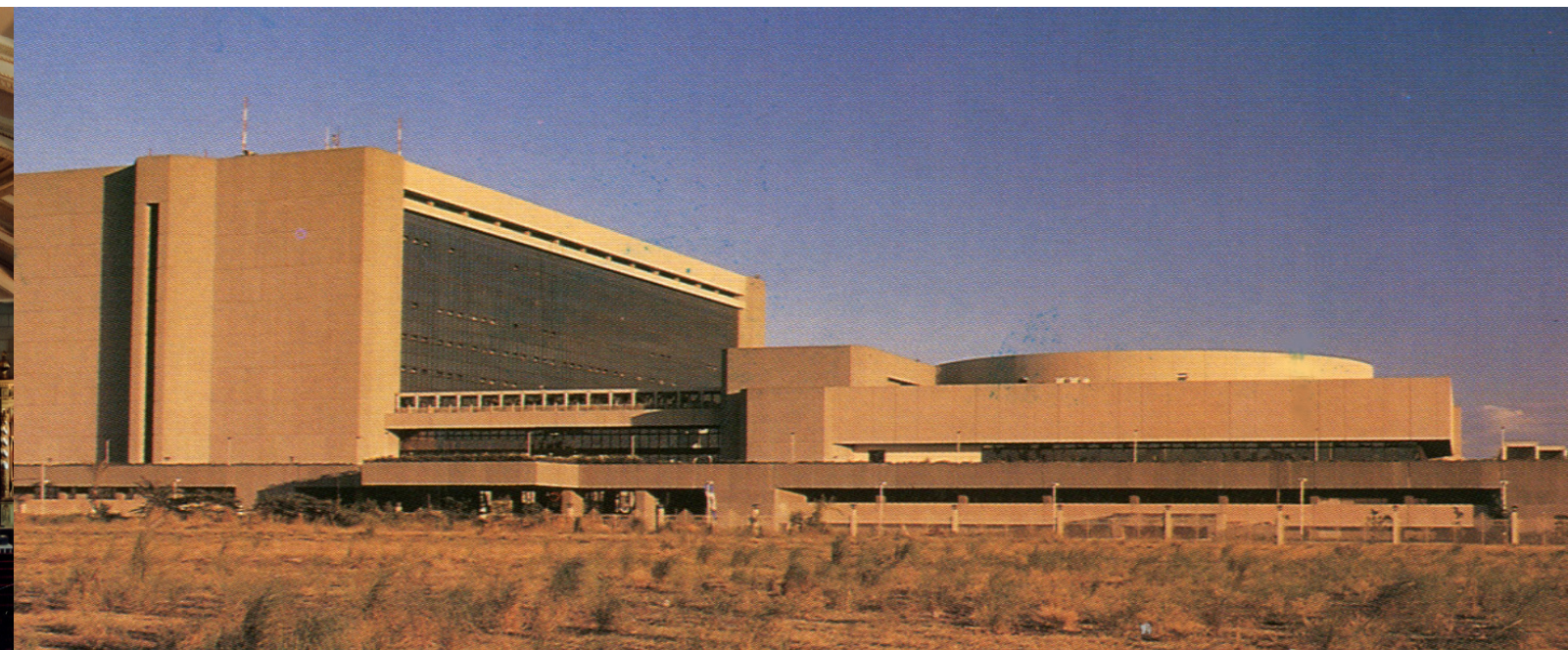


## St. James the Greater

Manila, Philippines



St. James the Greater stands as a majestic example of Baroque architecture in the region. Its vast scale and elaborate ornamentation, complemented by soft, flowing lines, contribute to a visually captivating exterior and a serene ambiance within. For years, this architectural masterpiece has beautifully served the spiritual needs of the local community.



## Philippine National Bank Headquarters

Pasay City, Philippines

The old headquarters of the Philippine National Bank, located at Diosdado Macapagal Boulevard, is made up of three distinct masses that facilitate not only wayfinding inside the complex, but a recognizable silhouette against the other squat buildings along Pasay, a feature dictated by proximity to the airport. The complex now also houses the offices of Philippine Airlines.



# Urban Design

“Architecture guides society,  
*and orchestrates connectedness.*”



## Buendia Pedestrian Bridge

Makati City, Philippines

The Makati Pedestrian Footbridges form a series of elevated pathways spanning the major roads of the business district. These walkways offer pedestrians a secure and comfortable way to avoid traffic while linking essential areas in the heart of the city.



## Makati Underpasses

Makati City, Philippines

The Makati Pedestrian Underpasses are a network of underground pathways beneath the major thoroughfares of the central business district. These passages provide safe and convenient routes for pedestrians, offering respite from traffic and connecting key destinations such as business centers, shopping districts, and transportation hubs, enhancing urban mobility.



# Conceptual

“ Our young studio’s freshest minds  
are tempered with time-honored  
knowledge and technique.”



## PSALM Property

CONTEST FINALIST  
Quezon City, Philippines

Inclusive, inspiring, and always within reach. The HINGE, the next step up for the PSALM Diliman Property, will elevate the social and economic fabric of Quezon City CBD. The property will be integrated with the evolving transport hub at the corner of EDSA and Quezon Avenue where the site can be part of a larger Transit-Oriented Mixed-Use Development District. With future adaptability in mind, the design aims to create a vibrant mixed-use community, and integrate heritage building through adaptive reuse.



## New BSP Complex

COMPETITION ENTRY  
New Clark City, Tarlac, Philippines

The development features five buildings securely interconnected—the administration building with state-of-the-art offices and an interior plaza, cash operations and distribution building, banknotes and securities printing building and the gold, medals and coins production building. The overall design concept captures the flag’s dynamism, while the development’s architectural branding reflects a modern echo of the iconic BSP home originally designed by Architect Gabriel Formoso.



## The New Supreme Court Complex

WINNER, 1ST RUNNER UP  
Taguig City, Philippines

The design proposal for the new Supreme Court complex won 1st runner up in the International conceptual design competition 2016. It was developed bearing in mind the objective of creating an efficient and pleasurable built environment for its users, all while creating an effective and technologically advanced work environment.

An integral part of the design is the use of iconic elements, taken from classical Greek architecture. Incorporating elements of the Ionic order in a contemporary setting gives the structure a refined sense of elegant authority.



# Microhousing

Taguig City, Philippines

A conceptual modular housing study that builds around a triangular courtyard, fostering community. Each microhouse occupies at least 19 square meters of living space. With strategic unit and fenestration locations, the design addresses the privacy, natural light and ventilation needs of the users. The shed roofing and painted concrete exterior of the structure gives off a modern look but still leaves room for personalization.



# Camp Highland

Tagaytay City, Philippines

A mid-rise condominium building nestled in Tagaytay City, mirroring the charm of European lodging. This picturesque rustic alpine architecture meets modern design, offering serene nature views and cozy living spaces.



# The Plaza

Cebu City, Philippines

Rooted in a minimalist concept, this architecture focuses on a community-centric approach. By adopting a plan centered around the garden plaza, the architecture naturally creates an inviting communal space. This urban vision opens doors for community culture, art, entertainment, and opportunities for commerce.



# Laiya Resort Hotel

San Juan, Batangas, Philippines

This conceptual mid-rise luxury resort draws inspiration from the local crab population, featuring a playful and dynamic design. With its festive colors and claw-inspired facade, the resort includes segmented, articulated elements that optimize natural light and views. This immersive experience blends avant-garde architecture seamlessly with the area’s wildlife, offering guests a unique and harmonious stay.



# Ouahe Resort

San Juan, Batangas, Philippines

A conceptual design for a mid-rise resort that celebrates the beauty of the provincial landscape. Drawing from the concept of “oasis”, the architecture of the building echoes the calming traits of nature shown in its organic lines, earthy tones and natural forms thus creating a haven for people in search of tranquility from the modern urban chaos.

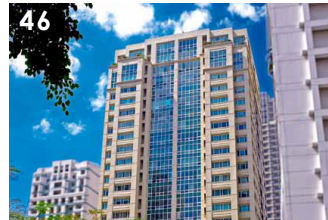
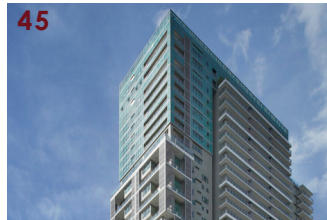
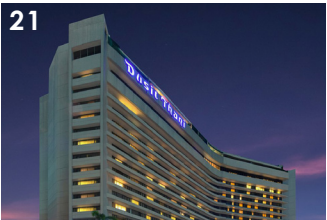
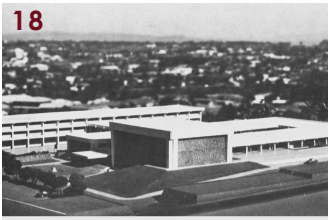
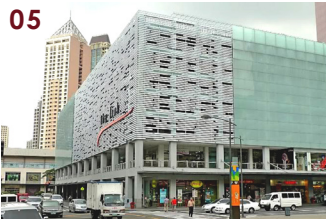


# Silong Spa & Beach Resort

San Juan, Batangas, Philippines

Silong Spa and Beach Resort embodies a conceptual mid-rise structure that pays homage to the local community’s fishing culture and Filipino identity. Through innovative reinterpretations of bahay-kubos; integration of the rich textures of lambats and Capiz shells into architectural elements; and the resemblance of the pool to that of a beach; the resort captures an immersive guest experience that resonates with the allure of the sea and provincial life.





# Partial List of Projects

1. BA Lepanto Building, Makati
2. Asian Institute of Management, Makati
3. Doña Narcisa Building, Makati
4. UCPB Building, Makati
5. The Link, Makati
6. Glorietta 4 and Ascott (formerly Oakwood), Makati
7. 6750 MCC Office, Makati
8. Makati City Hall
9. The Heritage Hotel (formerly The Regent of Manila), Pasay
10. ELJ Communications Center, Quezon City
11. Park Inn by Radisson, Davao City
12. Seafront Clubhouse, Pasay
13. Dansalan Gardens, Mandaluyong
14. Bangko Sentral ng Pilipinas Regional Unit, Lucena
15. US Embassy NOX-3 Outpatient Clinic, Pasay
16. Club Filipino, San Juan
17. PBCOM Tower, Makati
18. Development Academy of the Philippines, Tagaytay
19. Philippine Stock Exchange, BGC, Taguig
20. Globe Telecom Building, Cebu City
21. Manila Garden Hotel (Now the Dusit Thani Hotel), Makati
22. Two Salcedo Place, Makati
23. Bonifacio High Street, Taguig
24. Glorietta Redevelopment and Holiday Inn, Makati
25. Ayala Center Cebu
26. Marquee Mall, Angeles, Pampanga
27. Market! Market!, BGC, Taguig
28. PLDT Bacoar, Cavite
29. 1016 Residences, Cebu City
30. Nuvali Evolving Center, Santa Rosa, Laguna
31. National Irrigation Administration, Quezon City
32. Sunlife of Canada Headquarters, BGC, Taguig
33. The Residences at Greenbelt, Makati
34. BPI Center (formerly Far East Bank Center), Makati
35. Asia Tower Condominium, Makati
36. Bloc 10, Alabang, Muntinlupa
37. One Legazpi Park, Makati
38. BSP Minting Complex, East Ave.
39. Batangas Plant, Malvar, Batangas
40. La Vie and Vivant Flats, Alabang
41. GF & Partners Building, Makati
42. Casa Agricola, Pampanga
43. Continental TEMIC Expansion, Calamba, Laguna
44. El Jardin De Zaida, Batangas
45. Serendra East Tower, BGC, Taguig
46. Three Salcedo Place, Makati
47. The Regency at Salcedo, Makati
48. Veranza Mall, General Santos City





GF & Partners Building along HV Dela Costa Street, Makati City. The old GFP office was one of Ar. Formoso's last projects before his retirement.

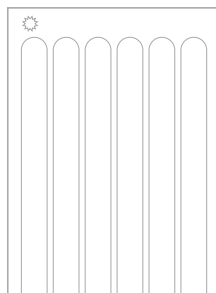
**“No other art form is as closely interwoven with society as architecture.”**

Ar. Gabriel P. Formoso  
Founding Partner  
(1915-1996)





# **GFP Architects / GFP Interiors**



11th Floor, BDO Plaza  
8737 Paseo de Roxas,  
Makati City 1226, Philippines  
(+63 2) 8553 7229 to 32  
[www.gfparchitects.com](http://www.gfparchitects.com)